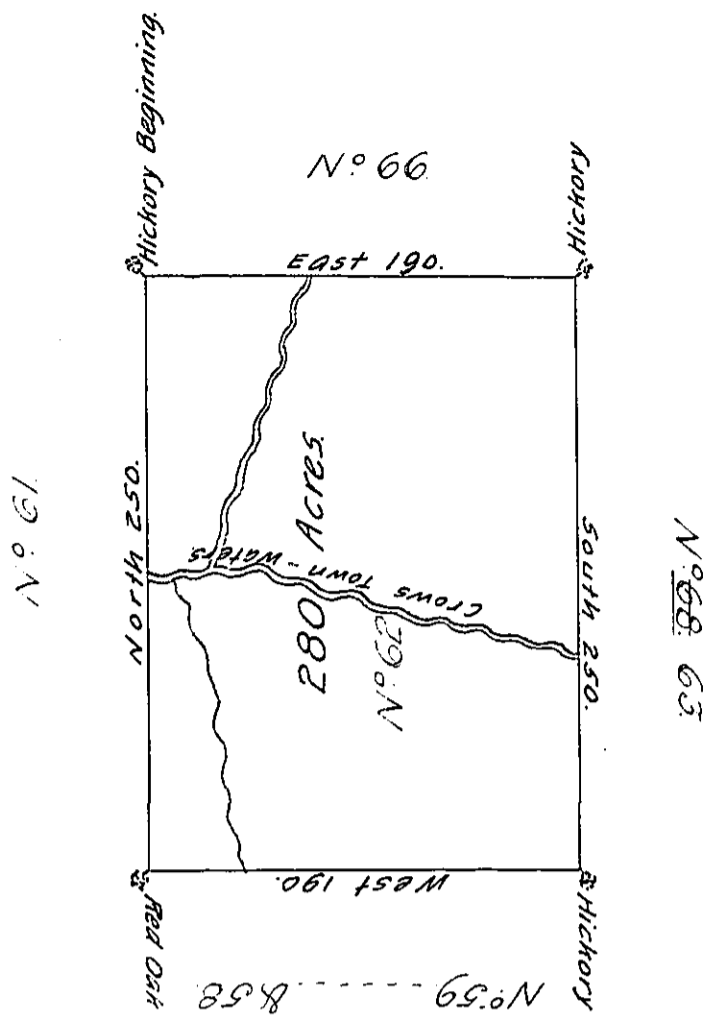


✓



The above is a Draught of a Survey made in the Month of June 1785, in Pursuance of Instructions from the Surveyor General Dated January 22^d 1785.

Situate on the North Side of the Ohio River on the borders of Crows Town Run, in District N° 2. Containing two Hundred & Eighty Acres with the Usual Allowance of 6th Cent.

Dan^l. Leet, D. S.

John Lukens, Esqr. Sur. Ge^l

IN TESTIMONY that the above is a copy of the original remaining on file in the Department of Internal Affairs of Pennsylvania, made conformably to an Act of Assembly approved the 16th day of February, 1833, I have hereunto set my Hand and caused the Seal of said Department to be affixed at Harrisburg, this twenty-third day of April 1906.

Geo. C. R. Brown
Secretary of Internal Affairs.